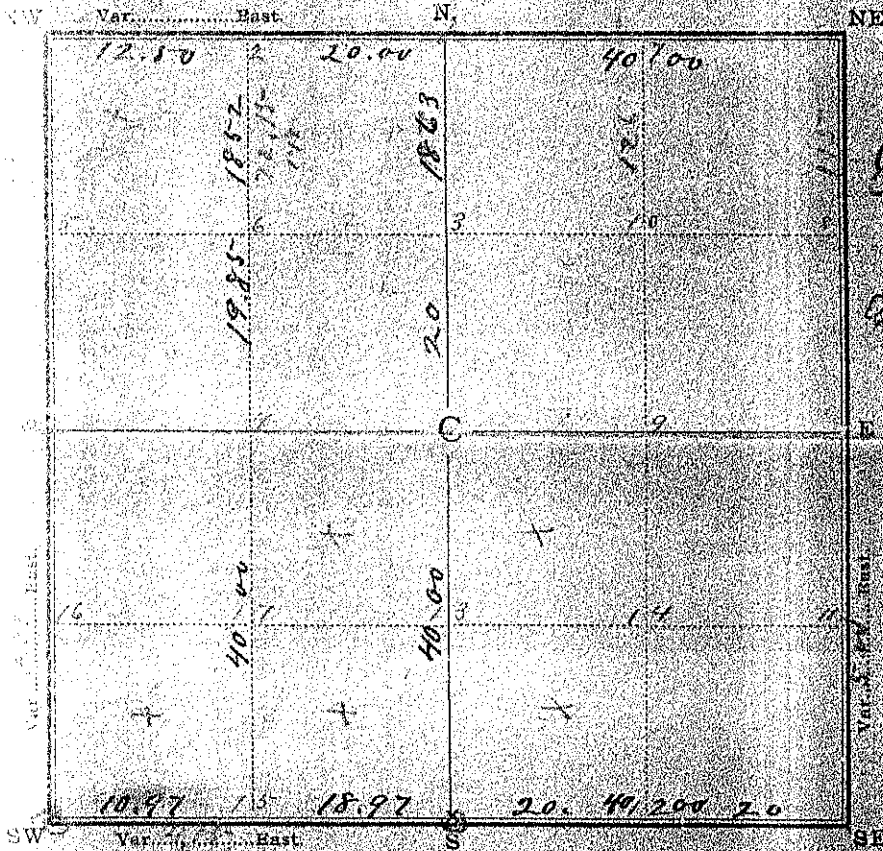


Office of County Surveyor,

*Monroe* County, Wis.

Sec. 6 Town 16 N., Range 120 W. 4th P. M.

REMARKS.



Survey made *April 3<sup>rd</sup> 1897* 1907

*Season assistant*  
*Chas. Aug. Roth*  
*Herman Hewitt*  
*Otto Hoffmann*  
*Paul Benevisek*  
*Otto Bartels*

*careful chaining double*  
*2 chain 19 lb. shortage*  
*from field notes on*  
*south line of the section*  
*on south side line which*  
*I have divided in proportion*  
*between the sections 40 and*  
*the rest on east*

Total Chaining W. error on South  
 " " according to field notes 1897 and 1907

TABLE OF CORNERS.

CORNER	BEARING TREES	DIAM. INCHES	BEARING	LINKS DISTANT	REMARKS	CORNER	BEARING TREES	DIAM. INCHES	BEARING	LINKS DISTANT	REMARKS
NE	24	24	N 87 W	40	Original						
	<i>Re-established in line 1897</i>										
NW	20	6	N 58 W	109 1/2							
	17	17	N 54 E	38	Original						
	16	16	N 55 W	47	"						
	12	12	N 50 E	98	"						
SW	20	20	S 60 1/2 E	12.5	Original						
	<i>Stone Monument when 0</i>										
	<i>Stone now standing</i>										
SE	24	24	N 83 W	40	Original						
N	4	4	N 42 E	13							
	<i>Re-established in line</i>										
S	12	12	S 33 W	7 1/2							
	<i>Re-established in line</i>										
E					Original	13	20	16	S 87 W	13	
W					Original	15	20	24	S 63 W	15 1/2	
10	10	10	S 54 W	10							
2	20	20	S 26 E	20							
	8	8	N 7 1/2 W	10							
3	20	18	S 1 1/2 W	5							

I hereby certify that the above Diagram and Field Notes are correct of the *Partial* Survey of Section  
 6 Town 16 N., Range 120 W., as surveyed by direction of *Paul Benevisek*  
 Dated this *6th* day of *April* 1907

*Paul A. Holder*  
 County Surveyor, *Monroe* County, Wis.

**CSR 1264**