

CERTIFICATE

CERTIFIED LAND CORNER

No. 117 F

**21702341020**

I, Harley A. Sime, do hereby certify that on the 21 day of October 1977, I found ~~(none)~~ (no evidence) of the SW cor. NW $\frac{1}{4}$ -NE $\frac{1}{4}$  corner of Section 34, T 17 N, R 2 W, Fourth Principal Meridian, and I re-established said corner according to the Wisconsin Statutes as shown and described hereon.

History of original corner establishment: None

Dated this 1 day of Dec. 1977.

Description of corner evidence found:

Set this corner on line and half way between the center of the section and the North quarter corner.

County Surveyor  
Title

**Approved: HARLEY A. SIME  
MONROE CO. SURVEYOR**

Description of corner and witness monuments, references and accessories used to perpetuate the original or re-established location of this corner:

Set a 3/4" x 24" Iron Bar

Witnesses to corner location:

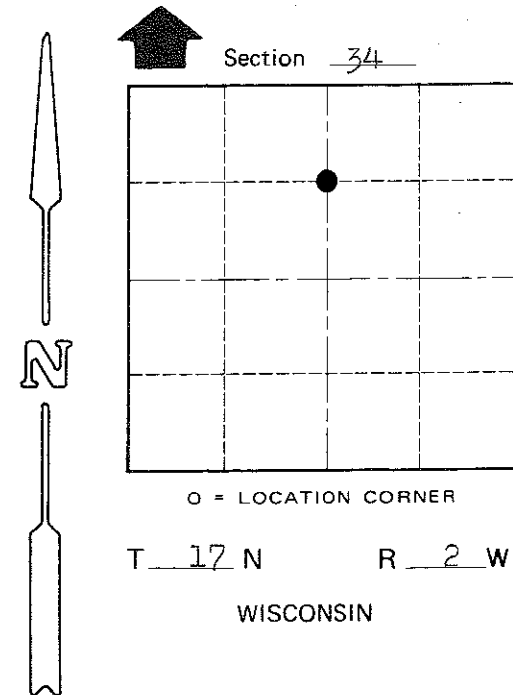
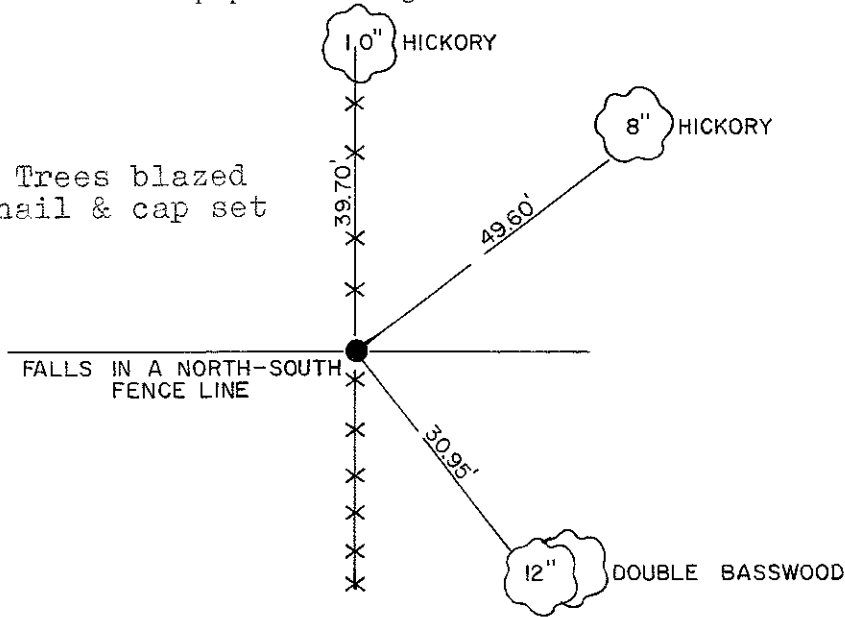
Pietz

Sime

Dechant

Trees blazed and nail & cap set

FALLS IN A NORTH-SOUTH FENCE LINE



COUNTY SURVEYOR FORM NO. 1

SURVEY CONTROL ORDER

Horizontal	_____
Vertical	_____

WISCONSIN COORDINATE SYSTEM

Corner	East (X)	North (Y)	Elevation (Z)	Zone
Control Sta. Name				

~~\_\_\_\_\_~~ or Town Adrian  
County of Monroe  
Wisconsin