

CERTIFICATE

CERTIFIED LAND CORNER

No. 112

21702300020

I, William C. Jung, do hereby certify that on the 27th day of March 19 78, I found (evidence) (no evidence) of the S 1/4 corner of Section 30, T 17 N, R 2 W. Fourth Principal Meridian, and I re-established said corner according to the Wisconsin Statutes as shown and described hereon.

History of original corner establishment:

No known recorded history since the original government survey.

Description of corner evidence found:

Accepted occupied fence corner as best available evidence.

Dated this 21st day of Nov. 19 78.

William C. Jung, R.L.S. 1323

County Surveyor's Office Title

Approved: HARLEY A. SIME MONROE CO. SURVEYOR

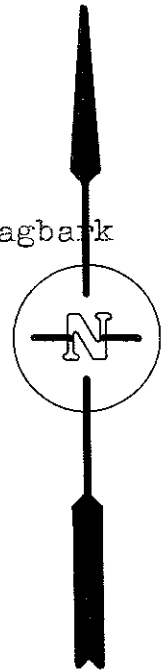
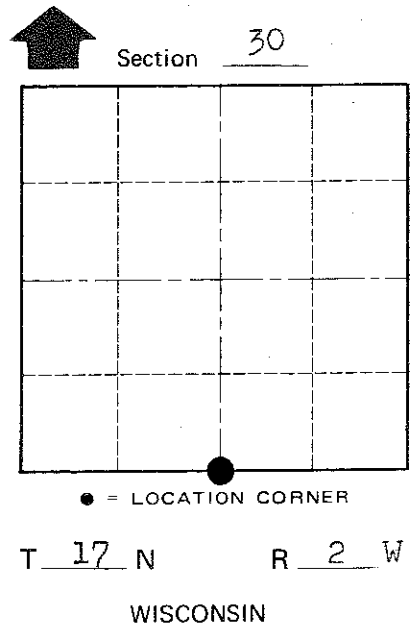
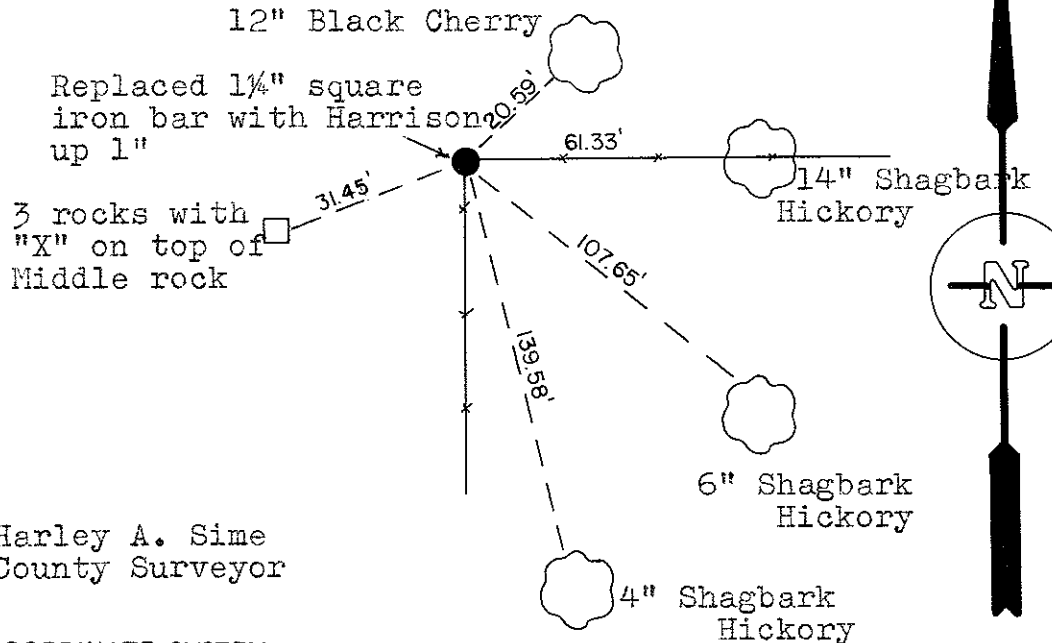
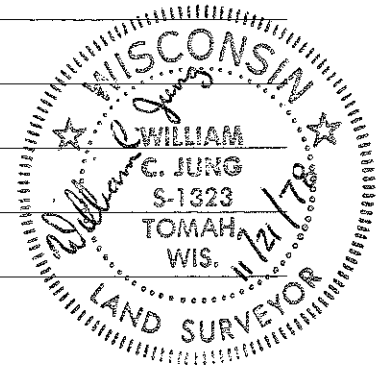
Description of corner and witness monuments, references and accessories used to perpetuate the original or re-established location of this corner:

(All trees double blazed with a N&C set in each.)

Witnesses to corner location:

G. Dechant

C. Pietz



Approved by: Harley A. Sime County Surveyor

SURVEY CONTROL ORDER table with columns for Horizontal and Vertical.

WISCONSIN COORDINATE SYSTEM table with columns for Corner, Control Sta. Name, East (X), North (Y), Elevation (Z), and Zone.

City, Village or Town Adrian County of Monroe

COUNTY SURVEYOR FORM NO. 1

I, Harley A. Sime, do hereby certify that on the 5<sup>th</sup> day of August 1976, I found (evidence) (~~no evidence~~) of the South 1/4 corner of Section 30, T 17 N, R 2 W, Fourth Principal Meridian, and I re-established said corner according to the Wisconsin Statutes as shown and described hereon.

Dated this 5<sup>th</sup> day of April 1977.

County Surveyor

**Approved: HARLEY A. SIME**  
**MONROE CO. SURVEYOR**

History of original corner establishment:

Description of corner evidence found:

Accepted a long occupied fence corner as the best available evidence. Mr. Carrol Ziegler testified that this has been the corner for a minimum of 50 years. The corner post was new, but he said it was placed where the old one was. The 1915 Monroe County atlas shows these lands to have been occupied in a like manner. NOTE: The owner then was Foth, Ziegler's father-in-law.

Description of corner and witness monuments, references and accessories used to perpetuate the original or re-established location of this corner:

Set 1"x30" square iron bar up 4"

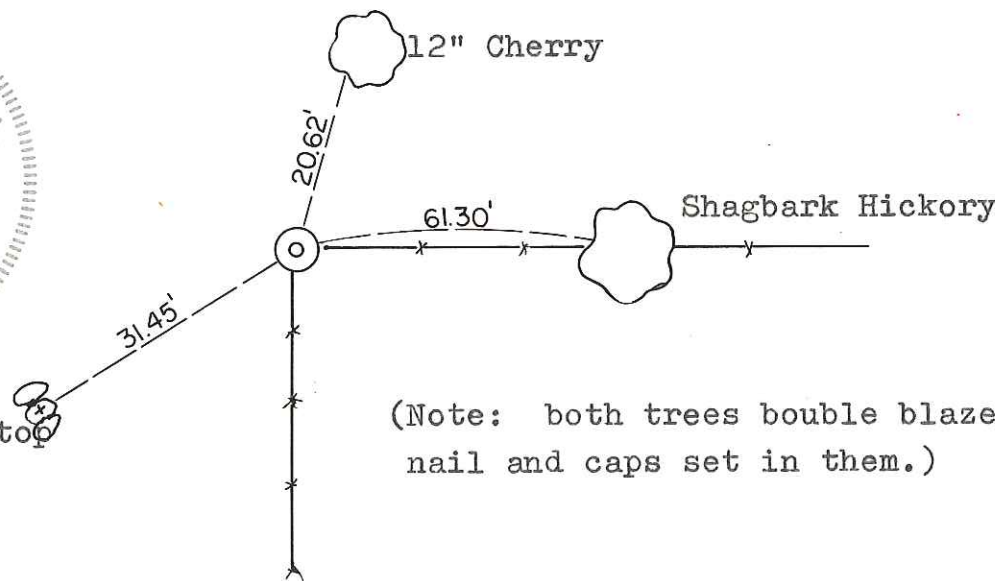
by new post.

Witnesses to corner location:

Jung

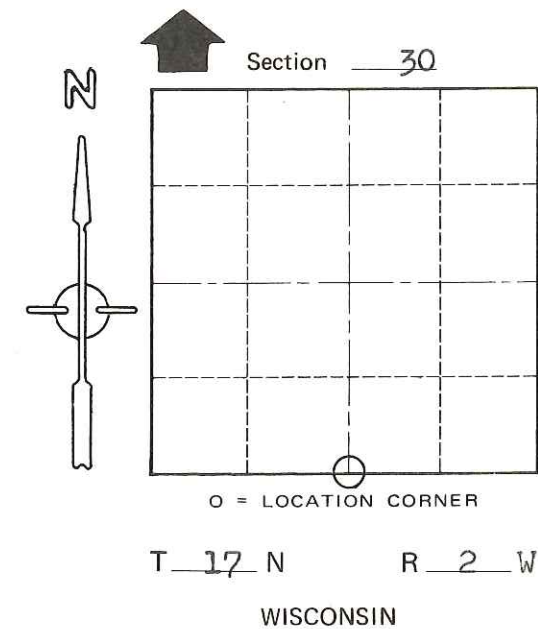
Dade

Dechant



Set 3 rocks with an "x" on top of middle rock.

(Note: both trees bouble blazed with nail and caps set in them.)



COUNTY SURVEYOR FORM NO. 1

SURVEY CONTROL ORDER

Horizontal	_____
Vertical	_____

WISCONSIN COORDINATE SYSTEM

Corner	East (X)	North (Y)	Elevation (Z)	Zone
Control Sta. Name				

City, Village or Town Adrian

County of Monroe