

CERTIFICATE

CERTIFIED LAND CORNER

No. 80

21702242000

I, Harley A. Sime, do hereby certify that on the 21 day of November 1975, I found (evidence) (no evidence) of the East 1/4 corner of Section 24, T 17 N, R 2 W Fourth Principal Meridian, and I re-established said corner according to the Wisconsin Statutes as shown and described hereon.

Dated this 29th day of March 19 77.

History of original corner establishment:

O. R. Dahl was here in 1878, and in 1870.

Description of corner evidence found:

Measured distance from the Southeast corner to the East 1/4 corner - Southeast 1/4; Doubled this and set on Mulock's bearing to the North. Fit section very well. (Mulock's corner is gone.)

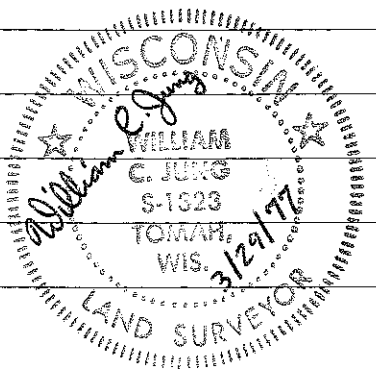
County Surveyor Approved: HARLEY A. SIME
Title MONROE CO. SURVEYOR

Description of corner and witness monuments, references and accessories used to perpetuate the original or re-established location of this corner:

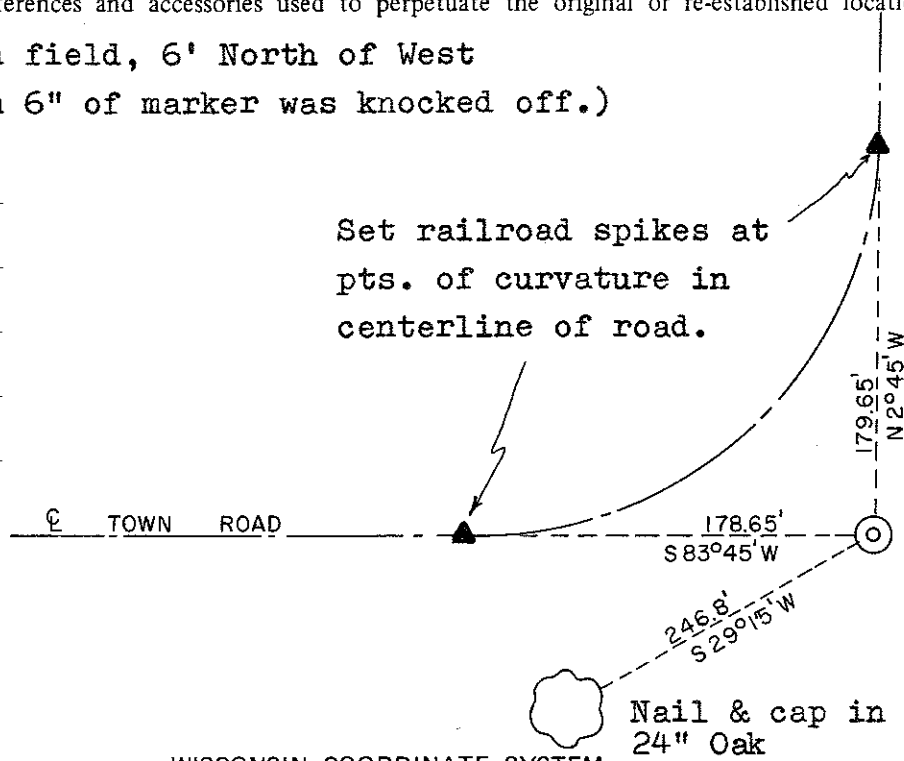
Set Harrison down 12" in open field, 6' North of West centerline extended. (Bottom 6" of marker was knocked off.)

Witnesses to corner location:

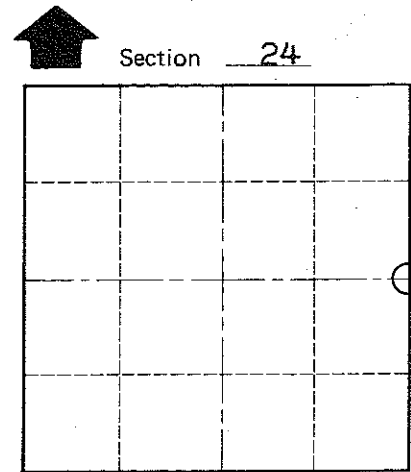
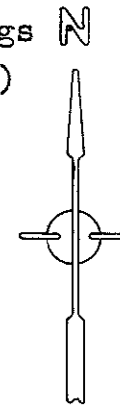
Jung
Malliet
Lueck



Set railroad spikes at pts. of curvature in centerline of road.



(Note: Bearings are magnetic.)



O = LOCATION CORNER

T 17 N R 2 W
WISCONSIN

SURVEY CONTROL ORDER

Horizontal _____
Vertical _____

WISCONSIN COORDINATE SYSTEM

Corner	East (X)	North (Y)	Elevation (Z)	Zone
Control Sta. Name				

Nail & cap in Blazed 24" Oak

City, Village or Town: Adrian

County of Monroe

COUNTY SURVEYOR FORM NO. 1