

CERTIFICATE

I, Nicholas M. Hillmer, do hereby certify that this document and the data contained herein was prepared by me or under my direct supervision and that I am a duly Licensed Land Surveyor under the laws of the State of Wisconsin.

Dated this 21st day of May, 2013

Nicholas M. Hillmer, P.L.S. 2909
Anderson Engineering of Minnesota, LLC.

CERTIFIED LAND CORNER

History of corner established since Original Government Survey

In September of 1980, Harley Sime set a Harrison monument by doubling the distance between the northeast corner of Section 19 and the north 1/16 of Section 19.

Description of evidence found

On October 29th, 2012, Anderson Engineering of Minnesota located the Harrison monument with the top missing 0.3 feet above grade and 0.2 feet from a metal fence post.

No. 21702192000



Description of corner and witness monuments, references and accessories used to perpetuate the original or re-established location of this corner:

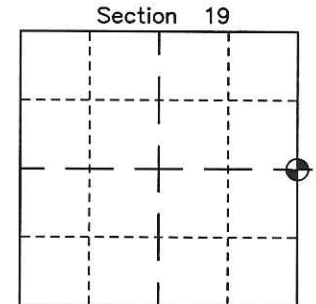
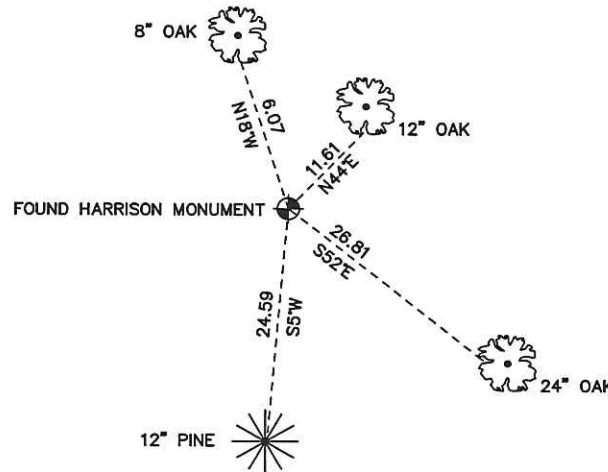
Witnesses to corner location:

Nick Hillmer
Josh Oslund
Dan Greenwald

MONROE COUNTY
COORDINATE SYSTEM
NAD 1983 (2007)

HARRISON MONUMENT
Northing (Y) 376274.70
Easting (X) 668492.36

Base Station - 22 182W
Northing (Y) 408053.25
Easting (X) 679287.00



⊕ = LOCATION CORNER
Corner I.D. E 1/4 19
T 17 N R 2 W
Town of Adrian
Monroe County, WI.

All distances are shown in U.S. Survey Feet.
Ties are to 60D nails set in trees.
Bearings are for tie reference purposes only.
Coordinates were derived from RTK GNSS procedures.

CERTIFICATE

CERTIFIED LAND CORNER

No. 75

21702192000

I, Harley A. Sime, do hereby certify that on the 29th day of September 19 80, I found ~~(evidence)~~ (no evidence) of the E/4 corner of Section 19, T 17 N, R 2 W Fourth Principal Meridian, and I re-established said corner according to the Wisconsin Statutes as shown and described hereon.

Dated this 23rd day of Feb. 19 81.

Harley A. Sime, R.L.S. 355

County Surveyor
Title

History of corner establishment since Original Government Survey
No known recorded history since the original government survey.

Description of corner evidence found:

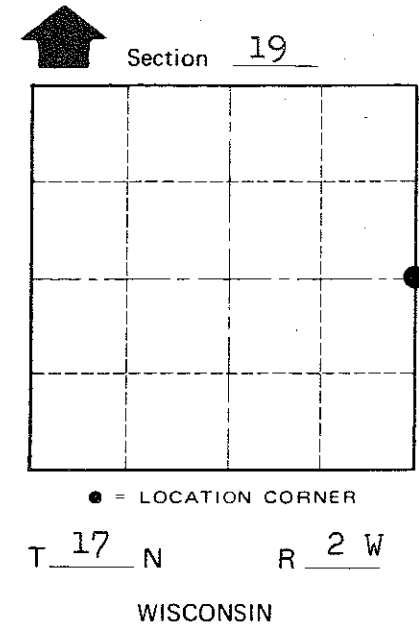
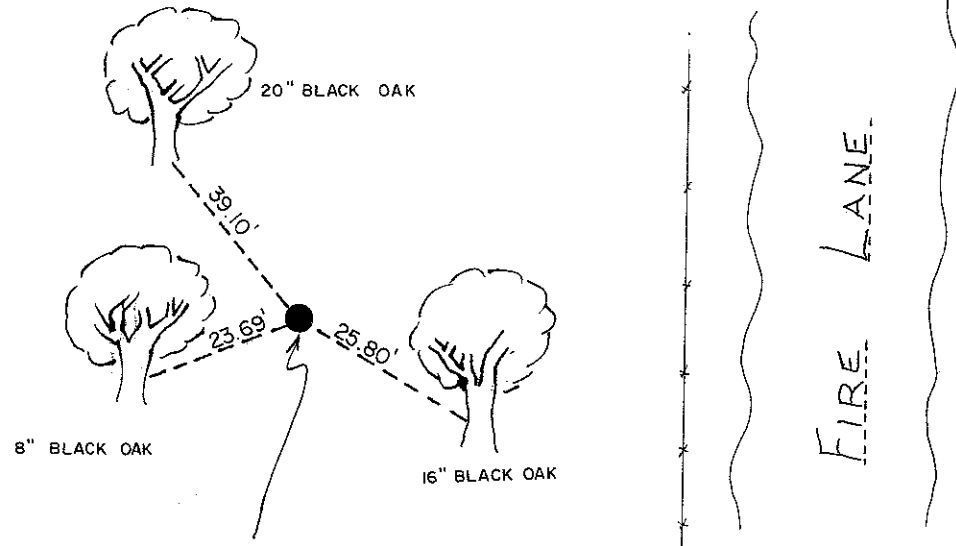
Set on line and by doubling the distance between the existing NE corner of Section 19 and the existing NE corner of the SE/4-NE/4 of Section 19.

COUNTY SURVEYOR FORM NO. 1

Description of corner and witness monuments, references and accessories used to perpetuate the original or re-established location of this corner:

Witnesses to corner location:

G. Dechant
B. Meyer
M. Scott Sowers



Set Harrison Monument, dug pit 3' west, corner is 45'± west of existing fence.

(All trees double blazed with N&C's set)

Approved: HARLEY A. SIME
MONROE CO. SURVEYOR

SURVEY CONTROL ORDER

Horizontal	_____
Vertical	_____

WISCONSIN COORDINATE SYSTEM

Corner	East (X)	North (Y)	Elevation (Z)	Zone
Control Sta. Name				

~~City, Village or~~ Town Adrian
County of Monroe