

CERTIFICATE

CERTIFIED LAND CORNER

No. 39

21702112000

I, Harley A. Sime, do hereby certify that on the 10th day of December 19 74, I found ~~(evidence)~~ (no evidence) of the E 1/4 corner of Section 11, T 17 N, R 2 W, Fourth Principal Meridian, and I re-established said corner according to the Wisconsin Statutes as shown and described hereon.

History of original corner establishment:

Dated this 28th day of March 19 77.

Description of corner evidence found:

Doubled forty distance of (1317') from southeast corner of section to forty fence corner to the north: Used bearing from southeast corner to fence (north-south) in section 2.

County Surveyor Title **Approved: HARLEY A. SIME**
MONROE CO., SURVEYOR

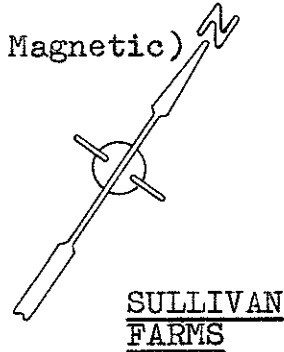
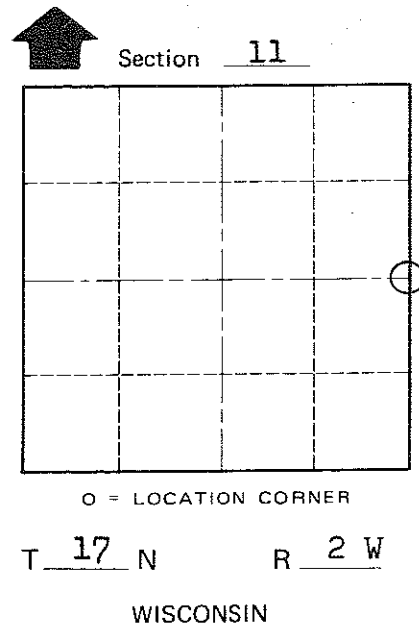
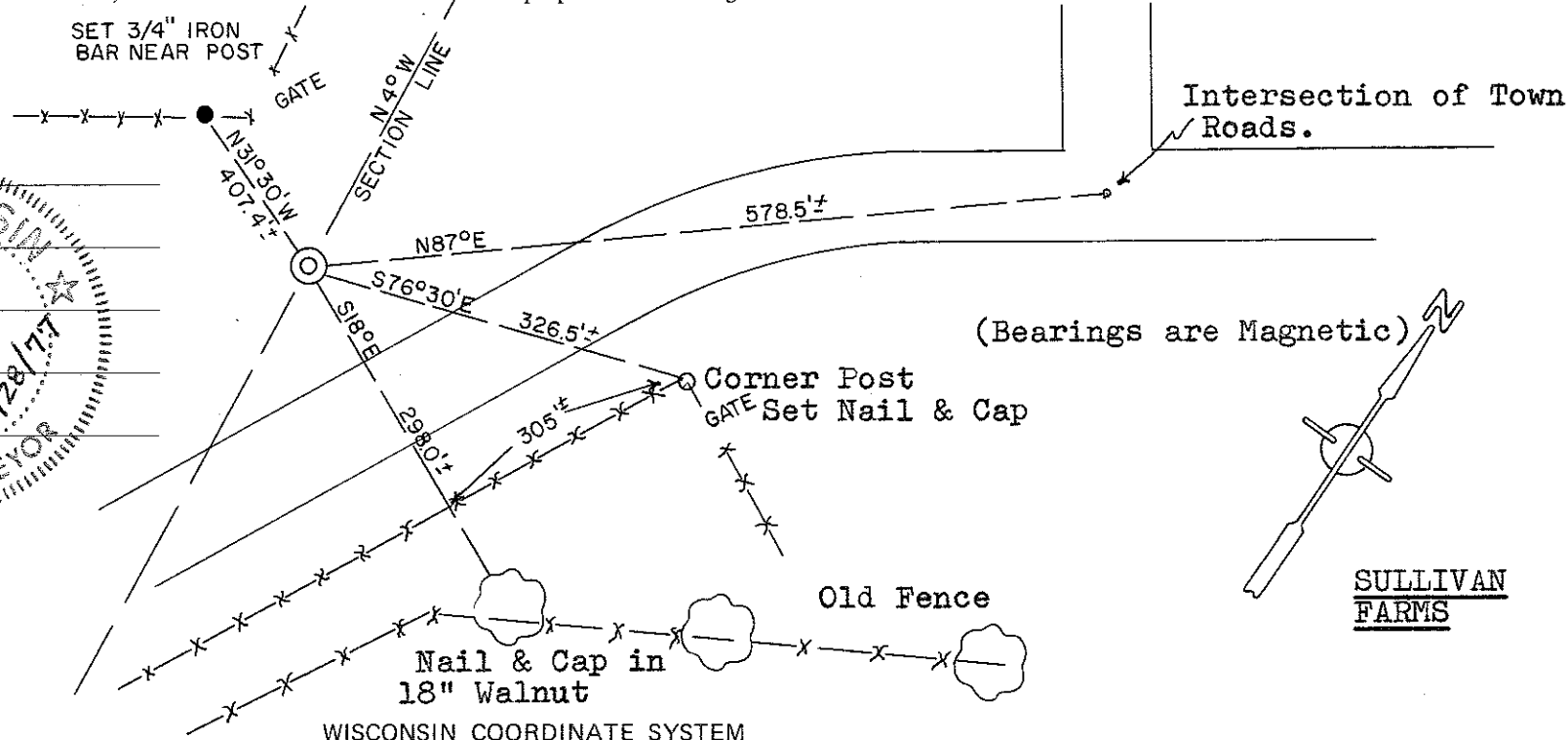
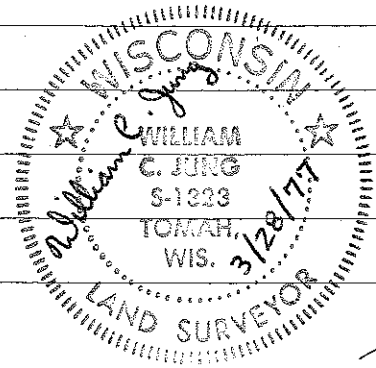
Description of corner and witness monuments, references and accessories used to perpetuate the original or re-established location of this corner:

Set Harrison Monument down 13".

Witnesses to corner location:

Jung

Malliet



SURVEY CONTROL ORDER

Horizontal	_____
Vertical	_____

WISCONSIN COORDINATE SYSTEM

Corner	East (X)	North (Y)	Elevation (Z)	Zone
Control Sta. Name				

City, Village or Town Adrian
County of Monroe

COUNTY SURVEYOR FORM NO. 1