

45

**U.S. PUBLIC LAND CORNER
MAINTENANCE**

**Corner ID : SE Sec. 10, T17N-R2W
21702100000**

<u>DATE</u>	<u>CREW</u>	<u>MONUMENT TYPE -----</u>
October 21, 2016	Zachariah P. Dechant Gary L. Dechant	Existing Harrison intact, at fence corner. 170' south of Glider Ave. 47' south of creek. Set sign 1' west/

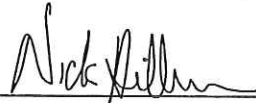
<u>References:</u>	<u>Bearing</u>	<u>Distance</u>
1) Set 3/4" x24" round iron bar, down 6", 4' west of 12" Box Elder	N85E	22.47'
2) Set 3/4" x24" round iron bar, down 6", 4' NW of 12" Black Cherry	S26E	31.80'
3) Set 3/4" x24" round iron bar, down 12" in field	S21W	25.20'
4) Set 3/4" x24" round iron bar, down 6", south of creek	N36W	15.52'



CERTIFICATE

I, Nicholas M. Hillmer, do hereby certify that this document and the data contained herein was prepared by me or under my direct supervision and that I am a duly Licensed Land Surveyor under the laws of the State of Wisconsin.

Dated this 23rd day of May, 2013



Nicholas M. Hillmer, P.L.S. 2909
Anderson Engineering of Minnesota, LLC.

CERTIFIED LAND CORNER

History of corner established since Original Government Survey

Hamilton Larue was here in September of 1900 and set a stone. Ray W. Hurlburt was here in November of 1940 and set a torque tube next to Larue's stone. William Jung was here in November of 1974 and was unable to find the stone or torque tube. Lawrence Feddersen was here in May of 1989 and found a stone, well marked on all four sides, down 12-15 inches. He did not find the torque tube. Feddersen replaced the stone with a Harrison monument. Bryan Meyer found the Harrison monument in 1991.

Description of evidence found

On February 7th, 2013, Anderson Engineering of Minnesota located a Harrison monument 1.0 foot west of the intersection of a fence that runs north, south, and west. The mark is 1.0 foot east of a witness post with a survey marker sign, 170 feet south of an east-west gravel road, and 45 feet south of a creek/gully.

No. 45
21702100000



Description of corner and witness monuments, references and accessories used to perpetuate the original or re-established location of this corner:

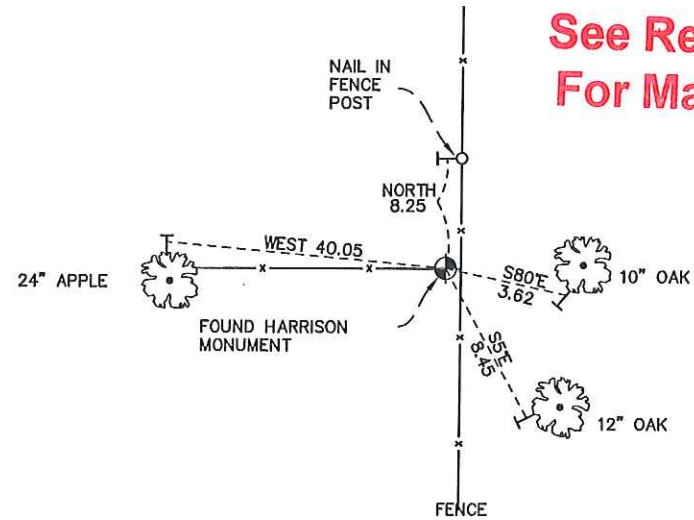
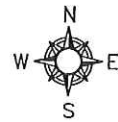
Witnesses to corner location:

Nick Hillmer
Josh Oslund
Dan Greenwald

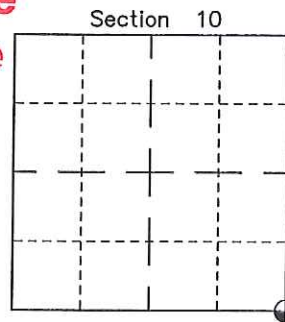
MONROE COUNTY
COORDINATE SYSTEM
NAD 1983 (2007)

HARRISON MONUMENT
Northing (Y) 384273.76
Easting (X) 684004.76

Base Station - 22 182W
Northing (Y) 408053.25
Easting (X) 679287.00



**See Reverse Side
For Maintenance**



⊕ = LOCATION CORNER
Corner I.D. SE 10
T 17 N R 2 W
Town of Adrian
Monroe County, WI.

All distances are shown in U.S. Survey Feet.
Ties are to 60D nails set in trees.
Bearings are for tie reference purposes only.
Coordinates were derived from RTK GNSS procedures.

I, Bryan H. Meyer, do hereby certify that on the 10th day of January 1991, I found (evidence) ~~(no evidence)~~ of the Southwest corner of Section 11, T 17 N, R 2 W Fourth Principal Meridian, and I re-established said corner according to the Wisconsin Statutes as shown and described hereon.

Dated this 14th day of Jan. 1991.

Bryan H. Meyer
Deputy County Surveyor
Title

History of corner establishment since Original Government Survey

Hamilton LaRue was here in September of 1900 and set a stone. Ray W. Hurlburt was here in November of 1940, found LaRue's stone and set a torque tube next to the stone. William Jung was here in November of 1974 and was unable to find the stone or torque tube. Lawrence Feddersen was here in May of 1989 and found a stone, well marked on all four sides, down 12-15". He did not find the torque tube. Mr. Feddersen replaced the stone with a Harrison marker.

Description of corner evidence found:

I found a cast iron Harrison marker on Southwest side of a 10" wood fence post, flush with ground. I accepted the Harrison marker as the corner.



H. A. Sime and Associates
P. O. Box 705
Tomah, Wisconsin 54660
Phone: (608)-372-5392

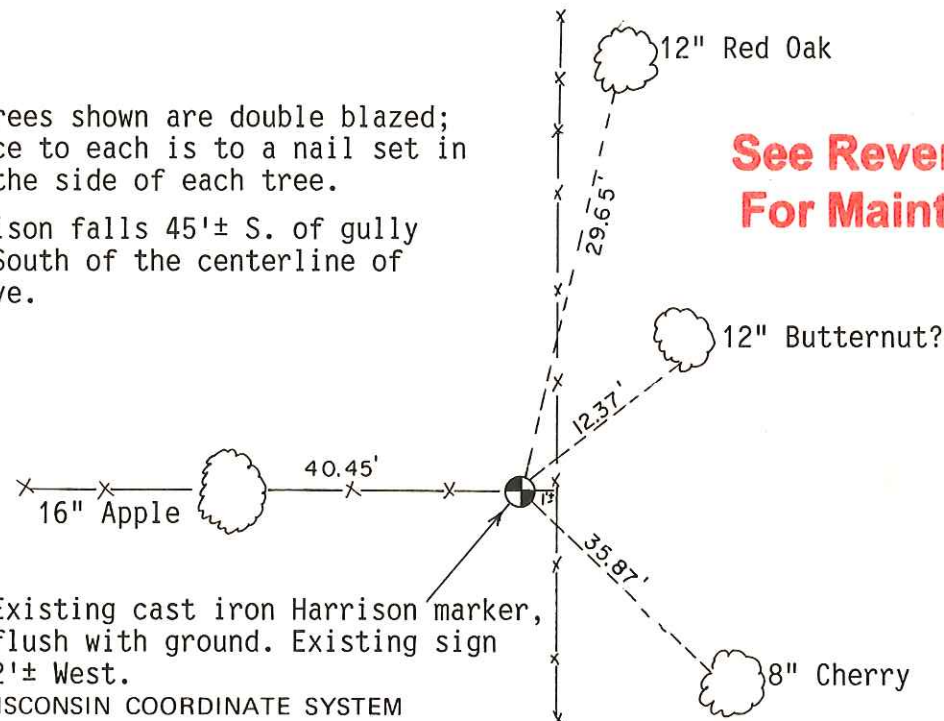
COUNTY SURVEYOR FORM NO. 1

Description of corner and witness monuments, references and accessories used to perpetuate the original or re-established location of this corner:

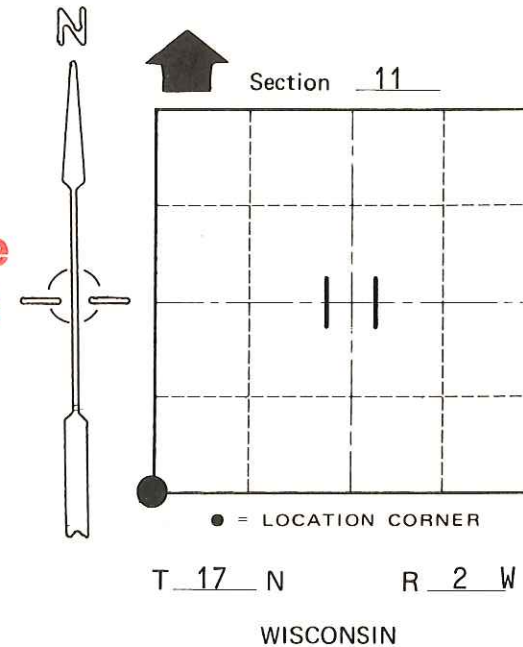
Crew: Meyer, Kenworthy
Date: January 10, 1991
Weather: Overcast, 20°±
Witnesses to corner location:

Bryan H. Meyer
John Kenworthy

The four trees shown are double blazed; the distance to each is to a nail set in a hack in the side of each tree.
NOTE: Harrison falls 45'± S. of gully and 170'± South of the centerline of Center Drive.



See Reverse Side For Maintenance



SURVEY CONTROL ORDER

Horizontal	_____
Vertical	_____

Corner	East (X)	North (Y)	Elevation (Z)	Zone
Control Sta. Name				

Existing cast iron Harrison marker, flush with ground. Existing sign 2'± West.

WISCONSIN COORDINATE SYSTEM

~~City, Village or~~ Town of Adrian
County of Monroe