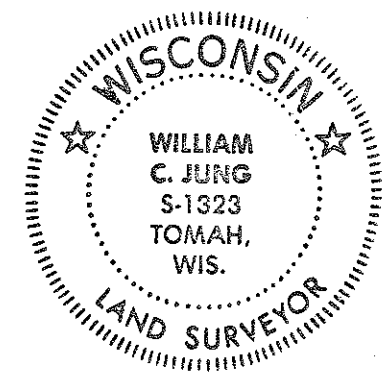


21702010020



I, William C. Jung, do hereby certify that on the sixteenth day of April 19 82, I found (evidence) of the North 1/4 corner of Section 12, T 17 N, R 2 W Fourth Principal Meridian, and I re-established said corner according to the Wisconsin Statutes as shown and described hereon.

Dated this 19th day of April 19 82.

William C. Jung - R.L.S. 1323

County Surveyor's Office

Title

Handwritten signature of William C. Jung

COUNTY SURVEYOR FORM NO. 1

Description of corner and witness monuments, references and accessories used to perpetuate the original or re-established location of this corner:

Witnesses to corner location:

William Jung

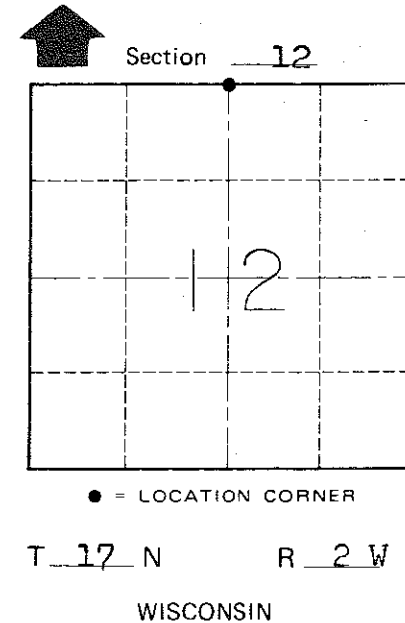
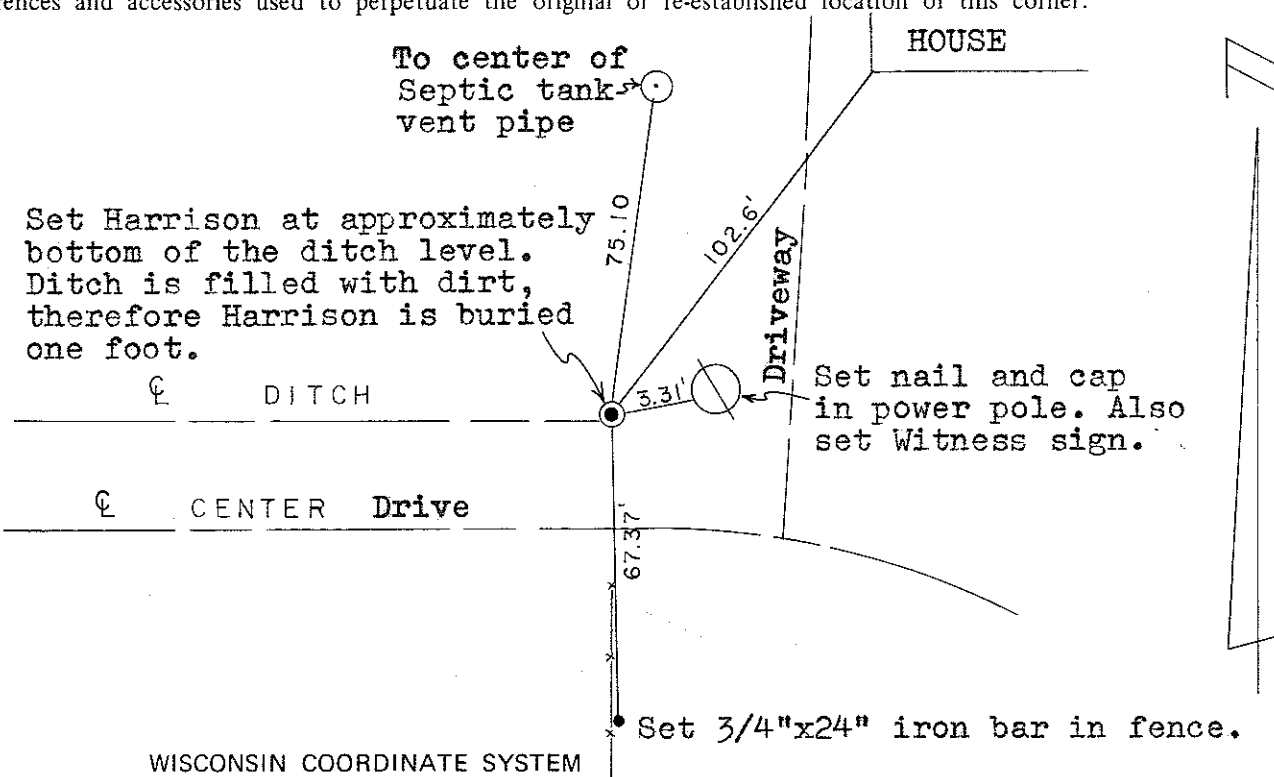
Bryan Meyer

History of corner establishment since Original Government Survey

Duke Marten was here in June of 1971 and set a 3/4" iron bar. Schroeder (Kenyon?) found an existing corner in April of 1895.

Description of corner evidence found:

Could not find Marten's Bar. It is possible it was knocked out when telephone cable was layed for a nearby home. This possibility is supported by the fact that we encountered telephone cable in digging hole for Harrison. Set corner to fit Marten's 1971 survey. (The location of this corner as set fits fairly well an old occupied fence to the East.)



Approved: HARLEY A. SIME MONROE CO. SURVEYOR

SURVEY CONTROL ORDER

Table with 2 rows: Horizontal, Vertical

WISCONSIN COORDINATE SYSTEM

Table with 5 columns: Corner, East (X), North (Y), Elevation (Z), Zone

City, Village or Town of Adrian, County of Monroe