

CERTIFICATE

CERTIFIED LAND CORNER

No. 106

21602270020

I, Garold A. Sime, do hereby certify that on the 21st day of March 19 90, I found ~~(evidence)~~ (no evidence) of the N $\frac{1}{2}$ corner of Section 34, T 16 N, R 2 W Fourth Principal Meridian, and I re-established said corner according to the Wisconsin Statutes as shown and described hereon.

Dated this 20th day of Dec. 19 90.

Garold A. Sime

Monroe County Surveyor

Title

History of corner establishment since Original Government Survey

Fred Holden was at this corner in May of 1907.

Description of corner evidence found:

I set this corner at the intersection with the fence line to the north with a straight line between the Section corners.

Description of corner and witness monuments, references and accessories used to perpetuate the original or re-established location of this corner:

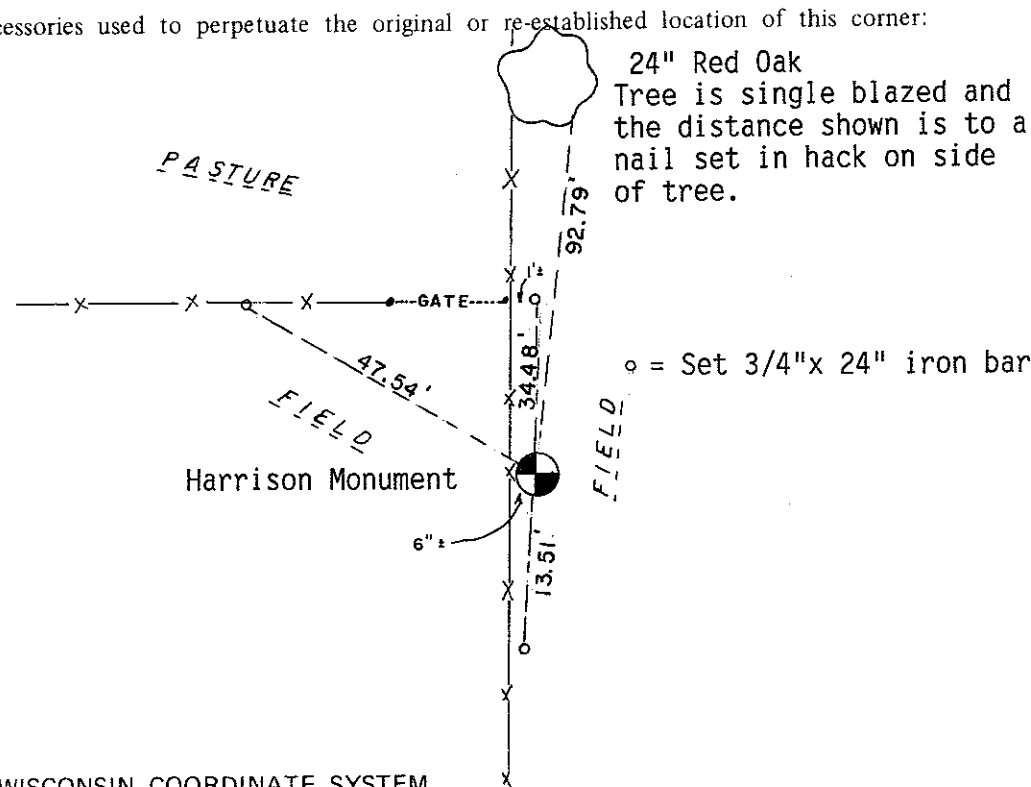
Set Cast Iron Harrison Monument at corner.
Set Guard Sign next to Harrison.

Witnesses to corner location:

Garold A. Sime, R.L.S.

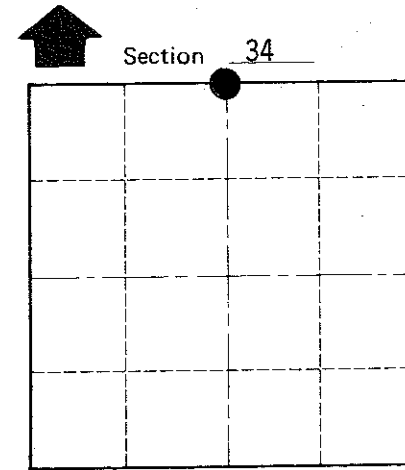
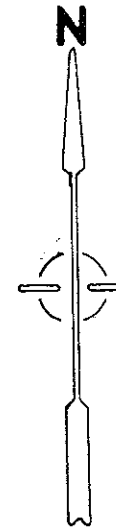
John Kenworthy

Brian Forsythe



24" Red Oak Tree is single blazed and the distance shown is to a nail set in hack on side of tree.

o = Set 3/4"x 24" iron bar



O = LOCATION CORNER

T 16 N R 2 W

WISCONSIN

COUNTY SURVEYOR FORM NO. 1

SURVEY CONTROL ORDER

Horizontal	_____
Vertical	_____

WISCONSIN COORDINATE SYSTEM

Corner	East (X)	North (Y)	Elevation (Z)	Zone
Control Sta. Name				

City, Village or Town of Ridgeville
County of Monroe