

21602240020

I, Garold A. Sime, do hereby certify that on the 30th day of June 1995, I found (evidence) (~~no evidence~~) of the W 1/4 corner of Section 25, T 16 N, R 2 W Fourth Principal Meridian, and I re-established said corner according to the Wisconsin Statutes as shown and described hereon.

History of corner establishment since Original Government Survey

No History of corner since the Original Government Survey

Description of corner evidence found:

Established this corner in the centerline of the Town Road and at the intersection of the fence line to the east projected westerly.

Dated this 30th day of Dec. 1995.

Garold A. Sime

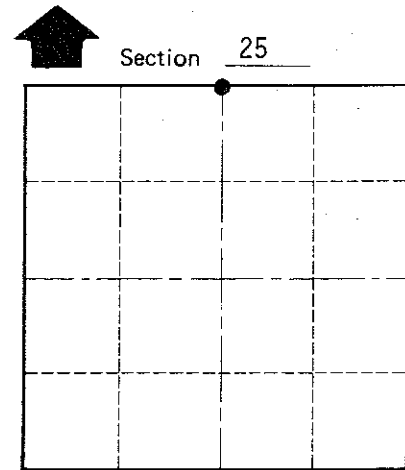
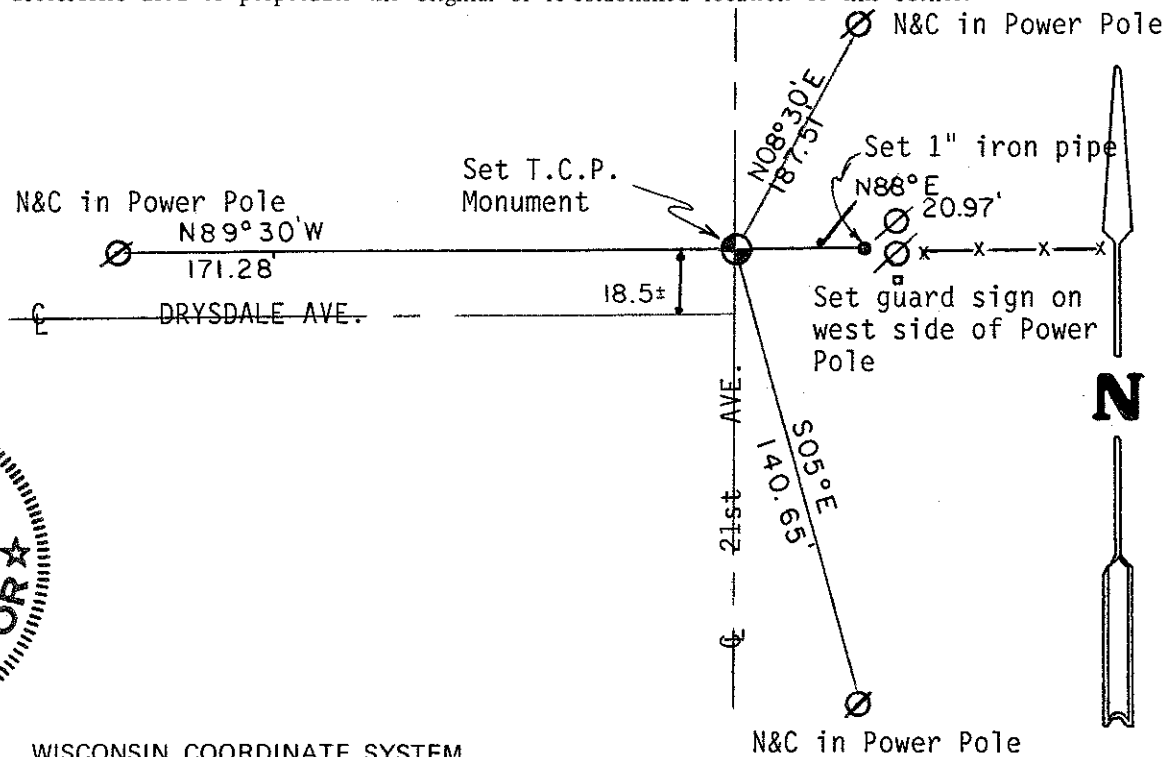
Monroe County Surveyor
Title

Description of corner and witness monuments, references and accessories used to perpetuate the original or re-established location of this corner:

Set T.C.P. Monument at corner

Witnesses to corner location:

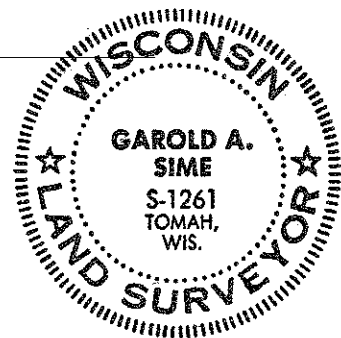
Garold A. Sime
Harold Haberlin
Doug Malliet



O = LOCATION CORNER

T 16 N R 2 W

WISCONSIN



SURVEY CONTROL ORDER

Horizontal	_____
Vertical	_____

WISCONSIN COORDINATE SYSTEM

Corner	East (X)	North (Y)	Elevation (Z)	Zone
Control Sta. Name				

~~City or Village~~ or Town of Ridgeville

County of Monroe

COUNTY SURVEYOR FORM NO. 1