

21602180020

CERTIFICATE

CERTIFIED LAND CORNER

History of corner establishment since Original Government Survey

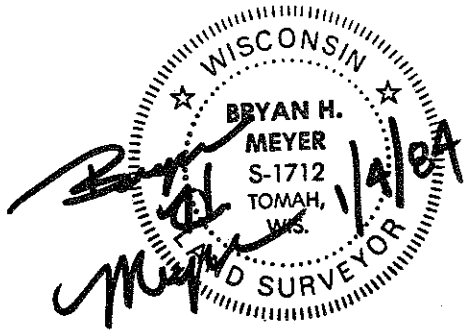
I, Bryan H. Meyer, do hereby certify that on the 3rd day of January 1984, I found (evidence) ~~of the~~ of the North 1/4 corner of Section 19, T 16 N, R 2 W Fourth Principal Meridian, and I re-established said corner according to the Wisconsin Statutes as shown and described hereon.

Dated this 4th day of Jan. 1984.  
Bryan H. Meyer  
Deputy County Surveyor  
Title

Schroeder was here in April of 1883.

Description of corner evidence found:

I set this corner on line between the Northeast and Northwest corners of Section 19 and on line with a fence to the South. This point fits the Original Notes very well.



COUNTY SURVEYOR FORM NO. 1

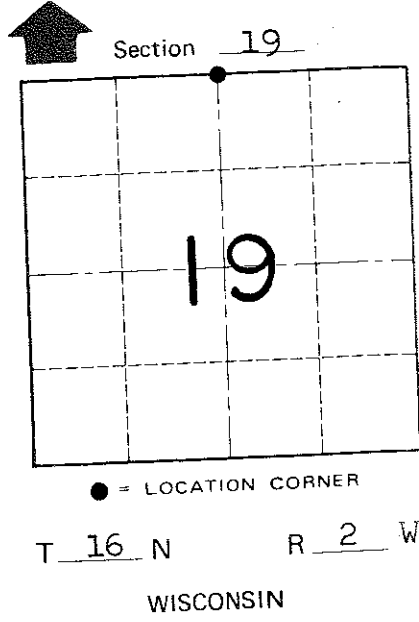
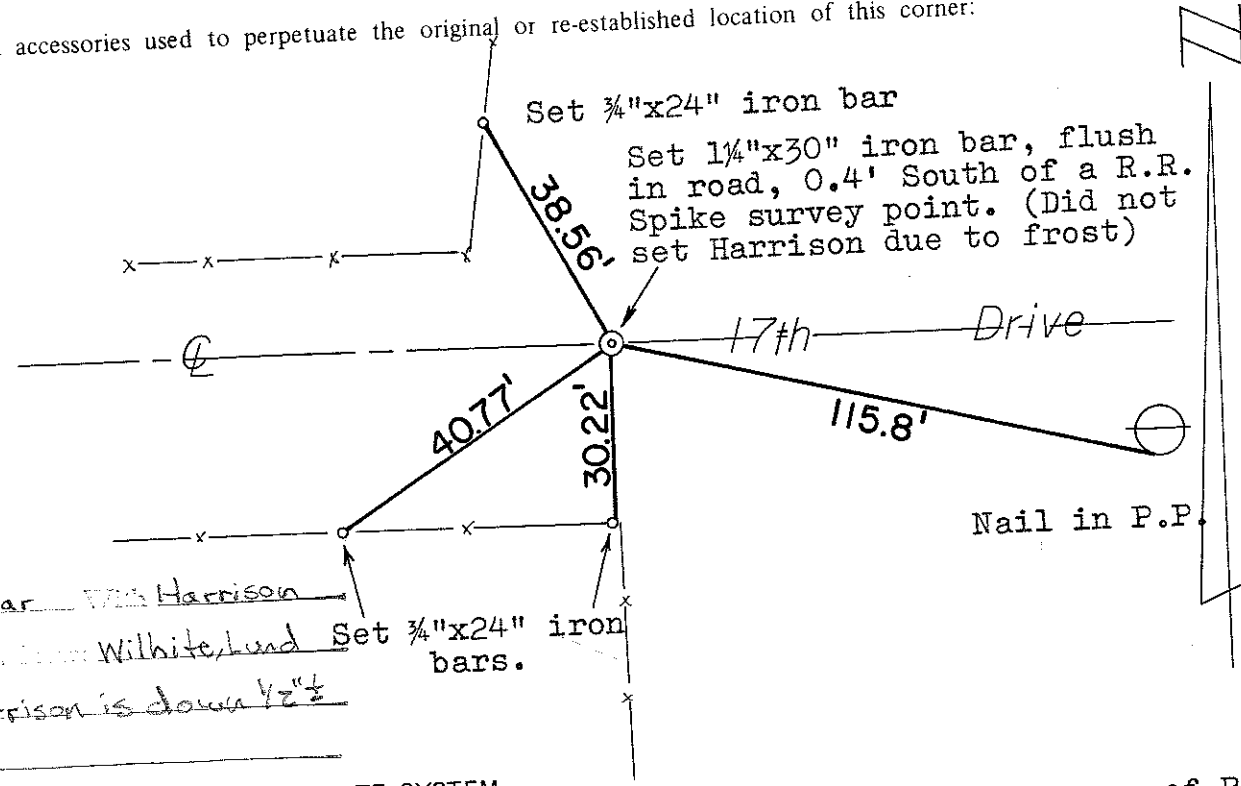
Description of corner and witness monuments, references and accessories used to perpetuate the original or re-established location of this corner:

Crew: Meyer, Perrigo  
Date: January 3rd, 1984-3:00 P.M.  
Weather: Windy, P. Cloudy, 35°±  
Witnesses to corner location:

Bryan H. Meyer  
Dennis Perrigo

APPROVED: Harley A. Sime  
Monroe County Surveyor

Replaced 1/4" bar with Harrison  
On 9/18/84 from Wilhite, Lund Set 3/4"x24" iron bars.  
Corner Harrison is down 1/2"±



SURVEY CONTROL ORDER

Horizontal \_\_\_\_\_  
Vertical \_\_\_\_\_

WISCONSIN COORDINATE SYSTEM

Corner	East (X)	North (Y)	Elevation (Z)	Zone
Control Sta. Name				

~~City, Village or~~ Town of Ridgeville  
County of Monroe