

21602180000

I, Harley A. Sime, do hereby certify that on the 5th day of November 19 81, I found (evidence) (~~no evidence~~) of the Southwest corner of Section 17, T 16 N, R 2 W Fourth Principal Meridian, and I re-established said corner according to the Wisconsin Statutes as shown and described hereon.

History of corner establishment since Original Government Survey

H. LaRue was here in February of 1897. Schroeder was here in April of 1883. D. Marten was here in June of 1972 and set an iron bar.

Description of corner evidence found:

Found Marten's iron bar and replaced it with a Harrison monument.

Dated this 13th day of Nov. 19 81.

Harley A. Sime R.L.S. 355

County Surveyor

Approved: HARLEY A. SIME

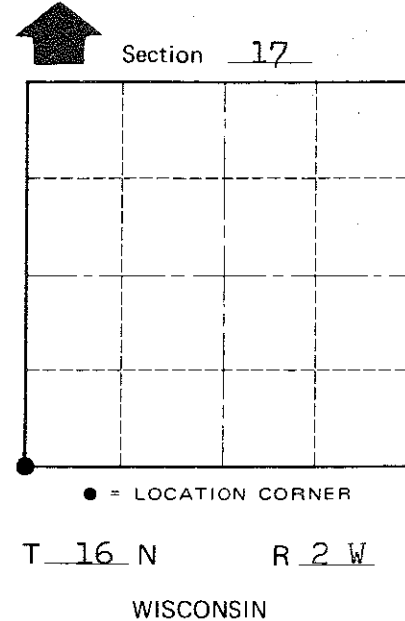
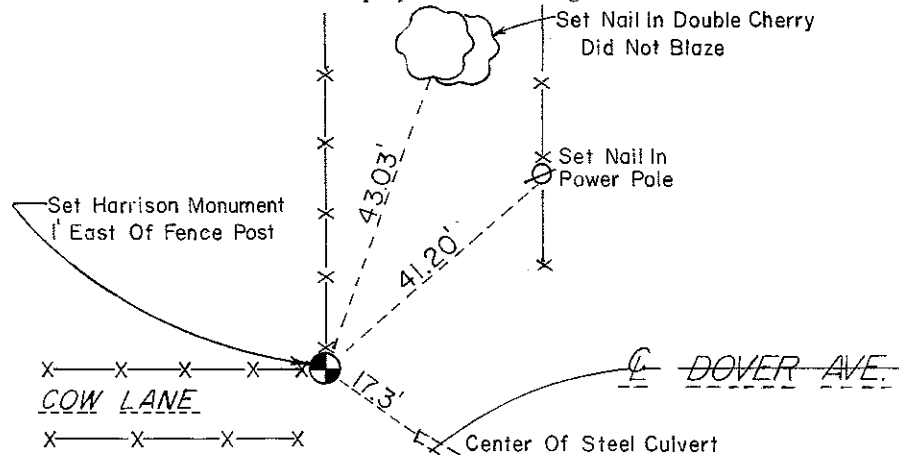
MONROE CO. SURVEYOR

Description of corner and witness monuments, references and accessories used to perpetuate the original or re-established location of this corner:

Witnesses to corner location:

B. Meyer

C. Pietz



COUNTY SURVEYOR FORM NO. 1

SURVEY CONTROL ORDER

Horizontal _____

Vertical _____

WISCONSIN COORDINATE SYSTEM

Corner	East (X)	North (Y)	Elevation (Z)	Zone
Control Sta. Name				

Town Ridgeville
County of Monroe
Wisconsin