

# 52

**U.S. PUBLIC LAND CORNER  
MAINTENANCE**

**Corner ID : S1/4 Sec.7, T16N-R2W**

**21602070020**

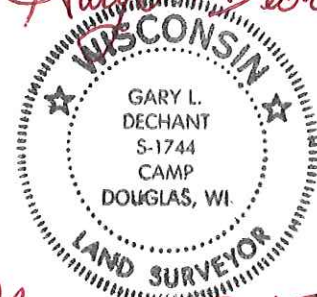
<u>DATE</u>	<u>CREW</u>	<u>MONUMENT TYPE</u> -----
May 26, 2015	Zachariah P. Dechant Gary L. Dechant	Found Harrison with top broke off. Down 12" Mag nails 2' N & E. 95' west of driveway at 16429 Kellogg Ave

References:

	<u>Bearing</u>	<u>Distance</u>
1) Set 3/4"x24" hex iron bar , down 8"	N21E	40.83'
2) Set 3/4"x24" round iron bar in lawn, down 8"	S20E	39.02'
3) Set 3/4"x24" iron pipe bar in field, down 14"	S21W	47.26'
4) Set 3/4"x24" round iron bar in cow yard, down 8"	N20W	38.02'

Harrison and reference markers set on straight lines.

*Gary L. Dechant*



*May 26, 2015*

I, Bryan H. Meyer, do hereby certify that on the 20th day of September 1984, I found (evidence) ~~(no evidence)~~ of the S 1/4 corner of Section 7, T16 N, R2 W Fourth Principal Meridian, and I re-established said corner according to the Wisconsin Statutes as shown and described hereon.

Dated this 15th day of Nov. 1984.

Bryan H. Meyer

Bryan H. Meyer, Deputy County Surveyor  
Title

History of corner establishment since Original Government Survey

Nothing Recorded.

Description of corner evidence found:

I set this corner in the centerline of a Town Road at a point where said centerline intersects a fence line from the South.

See Reverse Side For Maintenance



COUNTY SURVEYOR FORM NO. 1

Description of corner and witness monuments, references and accessories used to perpetuate the original or re-established location of this corner:

Crew: Meyer, Wilhite

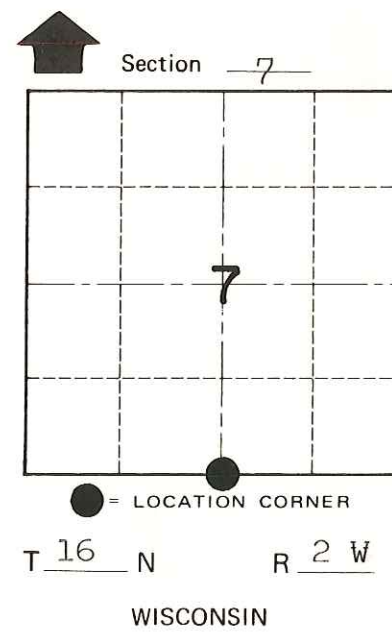
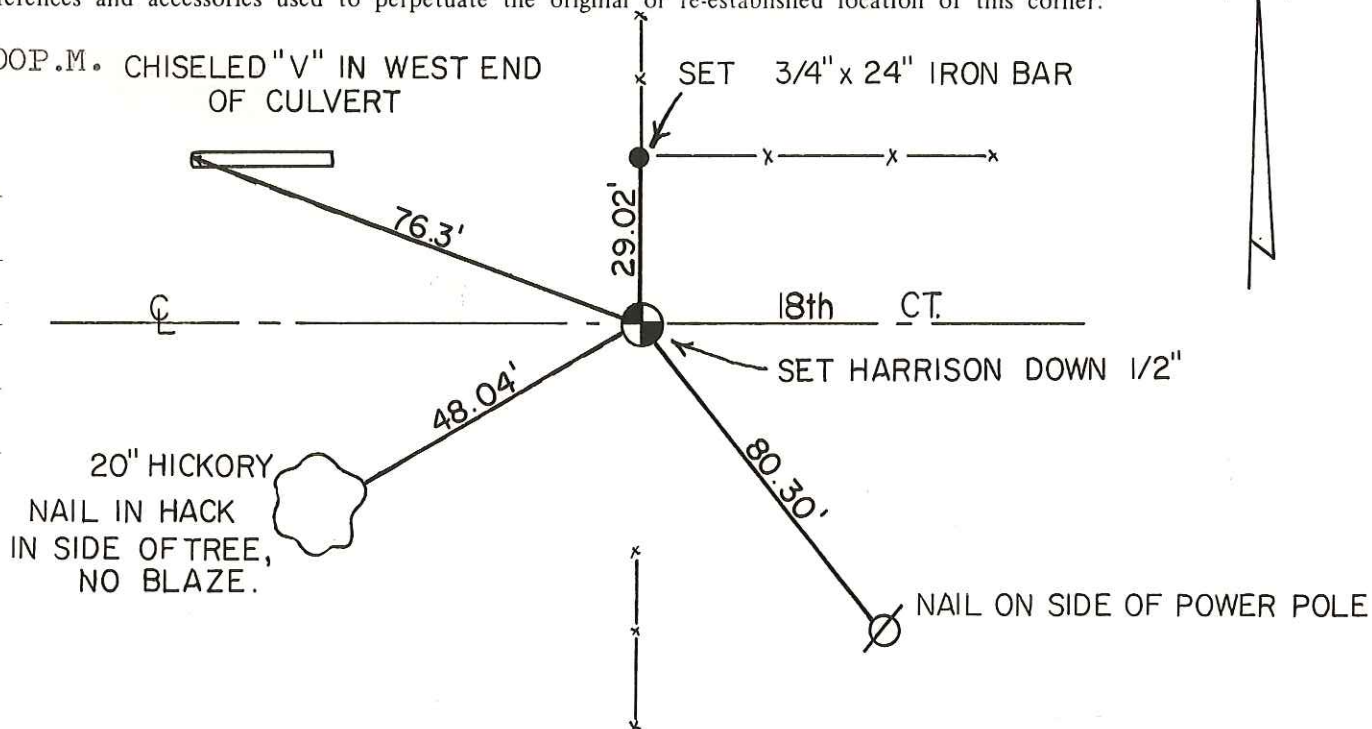
Date: September 20, 1984 - 3:00P.M. CHISELED "V" IN WEST END OF CULVERT

Weather: Clear, 80°+

Witnesses to corner location:

Bryan H. Meyer

Dallas Wilhite



SURVEY CONTROL ORDER

Horizontal	_____
Vertical	_____

WISCONSIN COORDINATE SYSTEM

Corner	East (X)	North (Y)	Elevation (Z)	Zone
Control Sta. Name				

City, Village or Town Ridgeville

County of Monroe