

21602030020

PAGE 2

I, Gary L. Dechant, do hereby certify that on the 28th day of October, 1987, I found (evidence) ~~no evidence~~ of the S¹/₄ corner of Section 3, T 16 N, R 2 W Fourth Principal Meridian, and I re-established said corner according to the Wisconsin Statutes as shown and described hereon.

Dated this 9th day of Nov., 1987.

Gary L. Dechant

Registered Land Surveyor, 1744
Title

History of corner establishment since Original Government Survey

Description of corner evidence found:

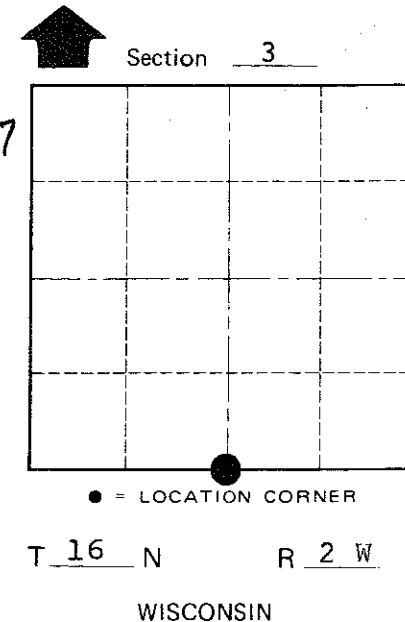
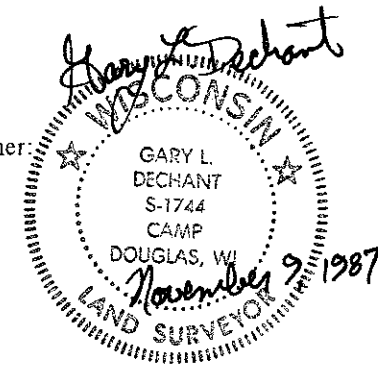
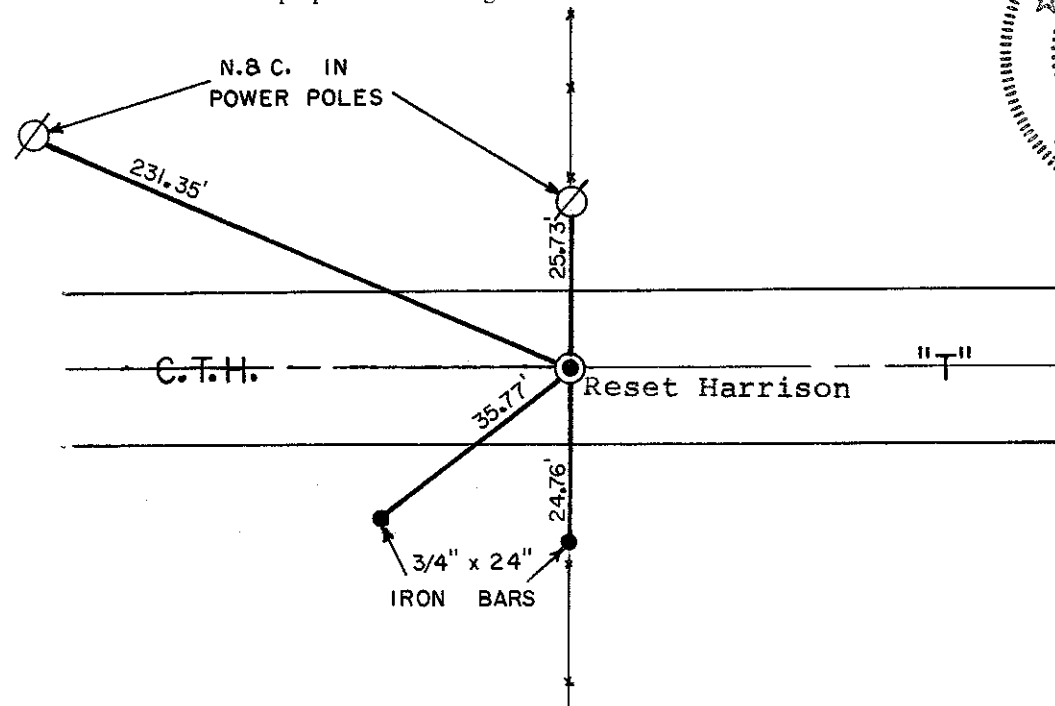
George Baker, Monroe County Highway Commissioner, contacted our office and stated highway repair was needed in this area and asked us to remove the existing Harrison. Reset Harrison from existing ties and new ties taken.

Description of corner and witness monuments, references and accessories used to perpetuate the original or re-established location of this corner:

Witnesses to corner location:

David E. Madison

Timothy S. Frederick



COUNTY SURVEYOR FORM NO. 1

SURVEY CONTROL ORDER

Horizontal	_____
Vertical	_____

WISCONSIN COORDINATE SYSTEM

Corner	East (X)	North (Y)	Elevation (Z)	Zone
Control Sta. Name				

City, Village or Town Ridgeville
County of Monroe

I, Harley A. Sime, do hereby certify that on the 30th day of June 1975, I found (evidence) (~~no evidence~~) of the South 1/4 corner of Section 3, T16 N, R2 W Fourth Principal Meridian, and I re-established said corner according to the Wisconsin Statutes as shown and described hereon.

History of original corner establishment:

Approved: HARLEY A. SIME
MONROE CO. SURVEYOR

Description of corner evidence found:

Accepted the intersection of the North-South line fence and the centerline of the road as the best available evidence. Fits the section corners East and West for distance and also the original government notes fairly well. This fits the occupied South line of the section as occupied as shown by aerial photos and surveying data.

Dated this 4th day of March 1976.

County Surveyor

Title

Description of corner and witness monuments, references and accessories used to perpetuate the original or re-established location of this corner:

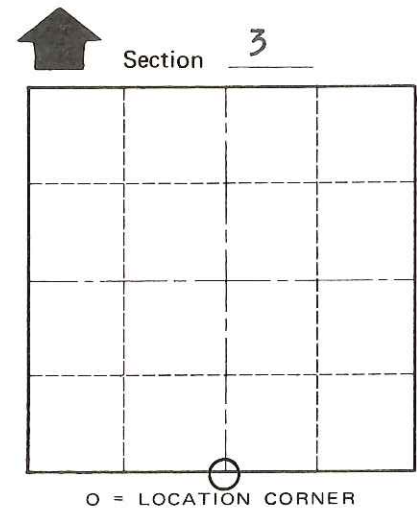
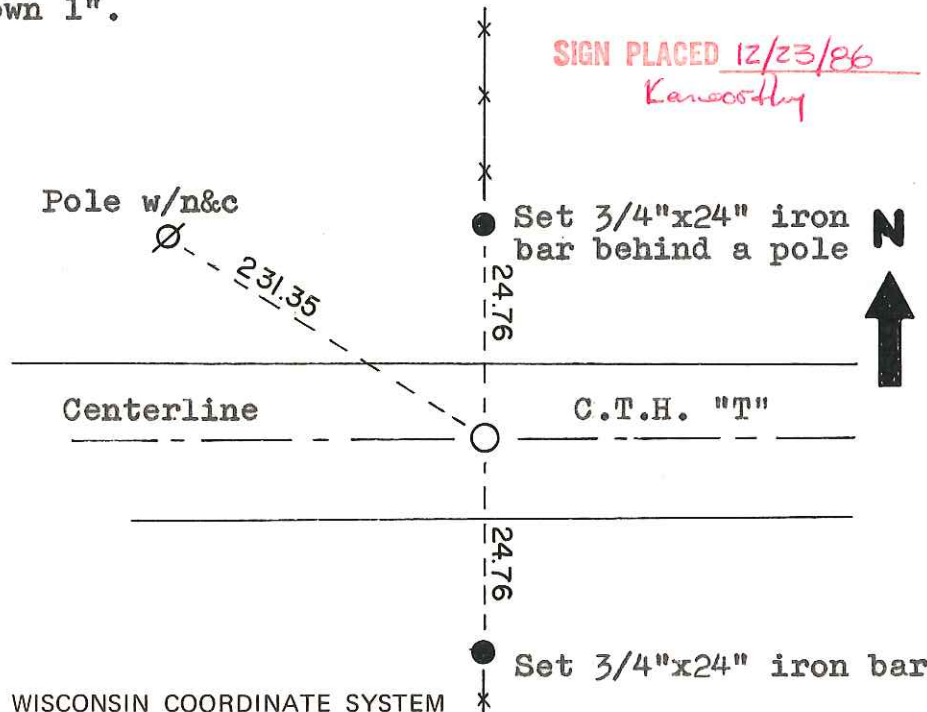
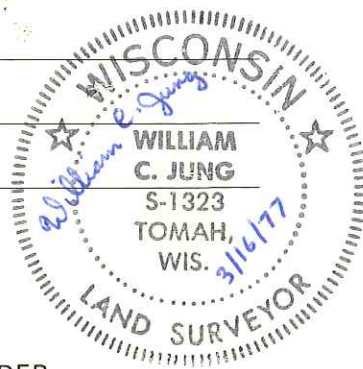
Set a Harrison marker in the road, down 1".

Witnesses to corner location:

W.C. Jung-Chief *W.C. Jung*

A. Lueck

G. Dechant



O = LOCATION CORNER
 T 16 N R 2 W
 WISCONSIN

COUNTY SURVEYOR FORM NO. 1

SURVEY CONTROL ORDER

Horizontal	_____
Vertical	_____

WISCONSIN COORDINATE SYSTEM

Corner	East (X)	North (Y)	Elevation (Z)	Zone
Control Sta. Name				

City, Village or Town Ridgeville

County of Monroe