

22

**U.S. PUBLIC LAND CORNER
MAINTENANCE**

**Corner ID : S1/4 Sec. 1, T16N-R2W
21602010020**

<u>DATE</u>	<u>CREW</u>	<u>MONUMENT TYPE -----</u>
July 8, 2016	Zachariah P.Dechant Gary L. Dechant	Found Railroad spike that checked with remaining ties at intersection of July Road/CTH "A"/ CTH "U" Removed railroad spike and replaced with 3/4"x24" hexagon iron bar, drove down 12" . Reset RRS over hex iron bar

References:

	<u>Bearing</u>	<u>Distance</u>
1) Set 3/4"x24" round iron bar, down 12" in field	N36E	58.11'
2) Set 3/4"x24" round iron bar, down 3", 9' NW of NW house corner	S34E	72.71'
3) Set 3/4"x24" round iron bar, down 12" in field	S36W	75.15'
4) Set 3/4"x24"round iron bar, down 6", east of 8" Spruce	N34W	61.15'

S1/4 corner and reference markers are set on straight lines.



I, William C. Jung, do hereby certify that on the 11th day of August 1980, I found (evidence) ~~(no evidence)~~ of the North 1/4 corner of Section 12, T 16 N, R 2 W Fourth Principal Meridian, and I re-established said corner according to the Wisconsin Statutes as shown and described hereon.

Dated this 9th day of Feb. 1981.

William C. Jung

William C. Jung, R.L.S. 1323

History of corner establishment since Original Government Survey

O.R. Dahl found a stone at this corner in June of 1868. Schroeder (?) was at this corner in May of 1895. Patrick Carroll set a R.R. spike at this corner in April of 1976. Ron Hayden measured to this point in June of 1979.

Description of corner evidence found:

Resurvey measurements show that this R.R. spike survey point at the occupied corner fits the overall section evidence very well. Set a Harrison marker at this point. Did not find a stone. The stone was probably destroyed when the road was dug up to put in a culvert. At a depth of 27" I found the remains of an old plank road. I probed under the planks for the stone but found only muck. I set the Harrison down 1" after breaking off the bottom 5" of the marker. Set nails and caps 2' North and 2' West of the marker.

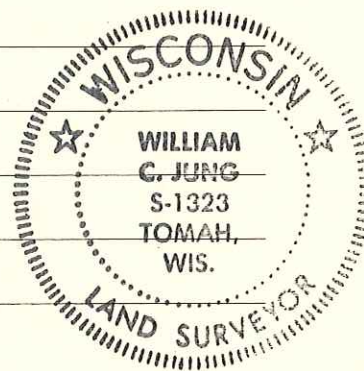
Approved: **HARLEY A. SIME**
MONROE CO. SURVEYOR

Description of corner and witness monuments, references and accessories used to perpetuate the original or re-established location of this corner:

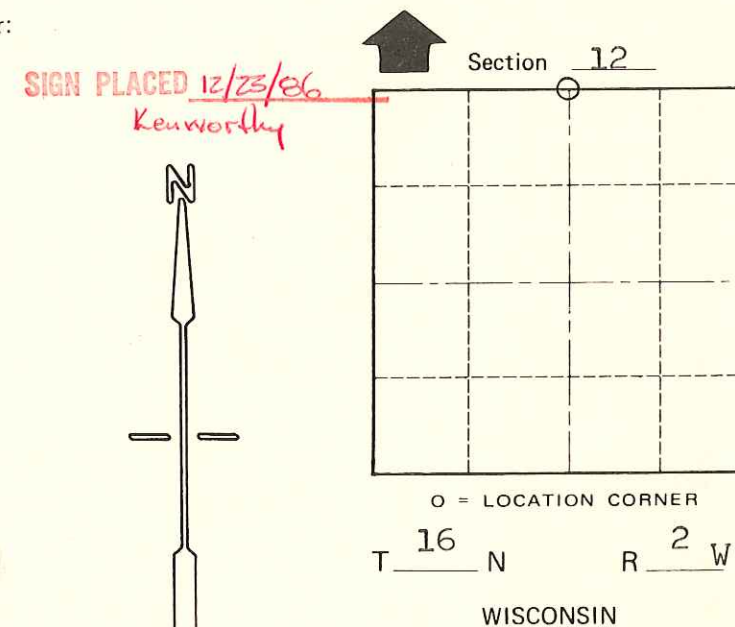
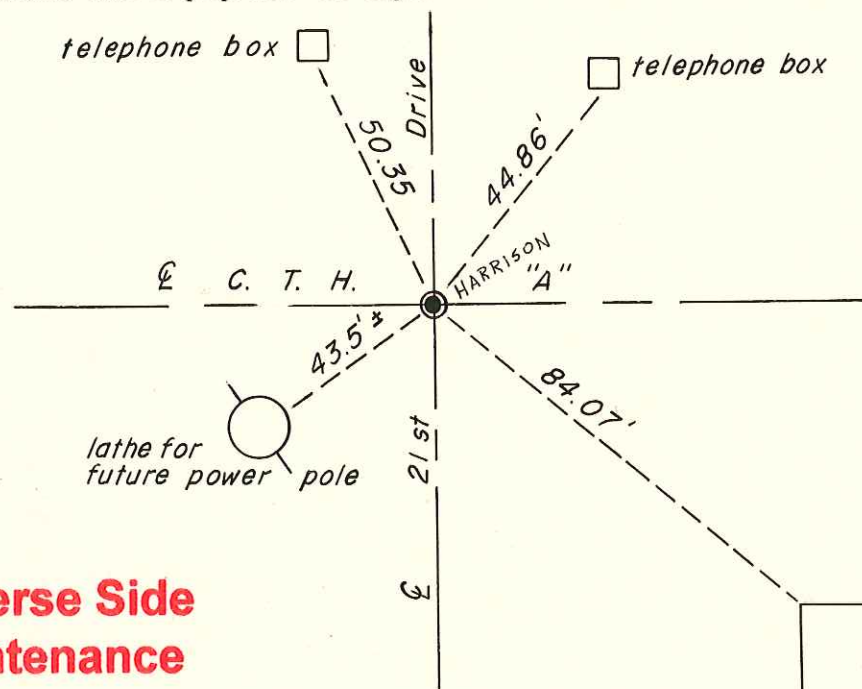
Witnesses to corner location:

William Jung

Gary Dechant



See Reverse Side For Maintenance



SURVEY CONTROL ORDER

Horizontal	_____
Vertical	_____

WISCONSIN COORDINATE SYSTEM

Corner	East (X)	North (Y)	Elevation (Z)	Zone
Control Sta. Name				

City, Village or Town Ridgeville
 County of Monroe
Wisconsin

COUNTY SURVEYOR FORM NO. 1